

# FOR GOOD MEASURE

A disparate narrative of geography and space, aesthetics and survival

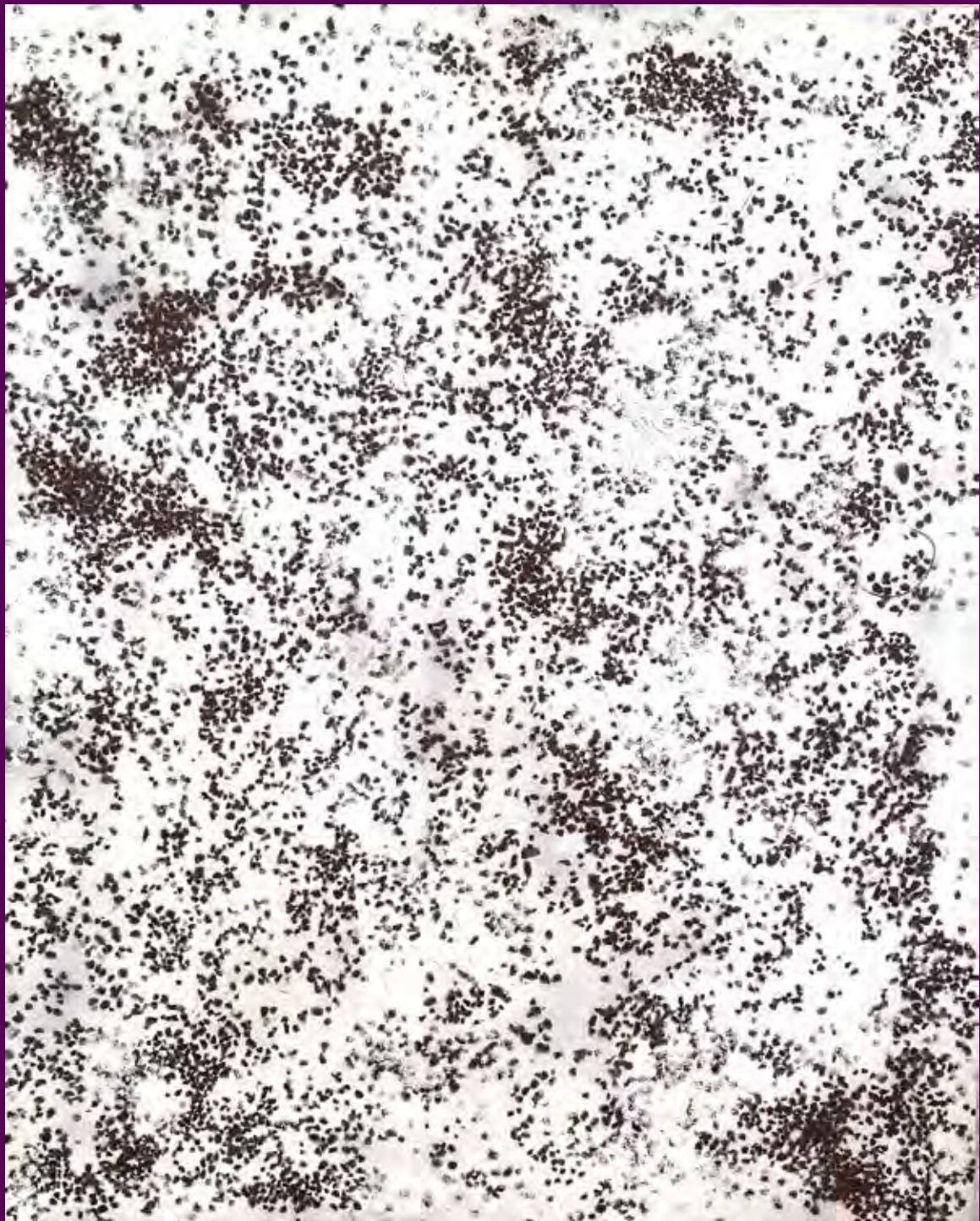
Experiences occur in a number of different ways, and often simultaneously. Experiences cohabitate, not as isolated events, but they are built texturally, informationally and psychologically, in conjunction with one another. I often refer to our contemporary moment as *post experiential*, because it can absorb the nuances and extremity that we negotiate each and every day.

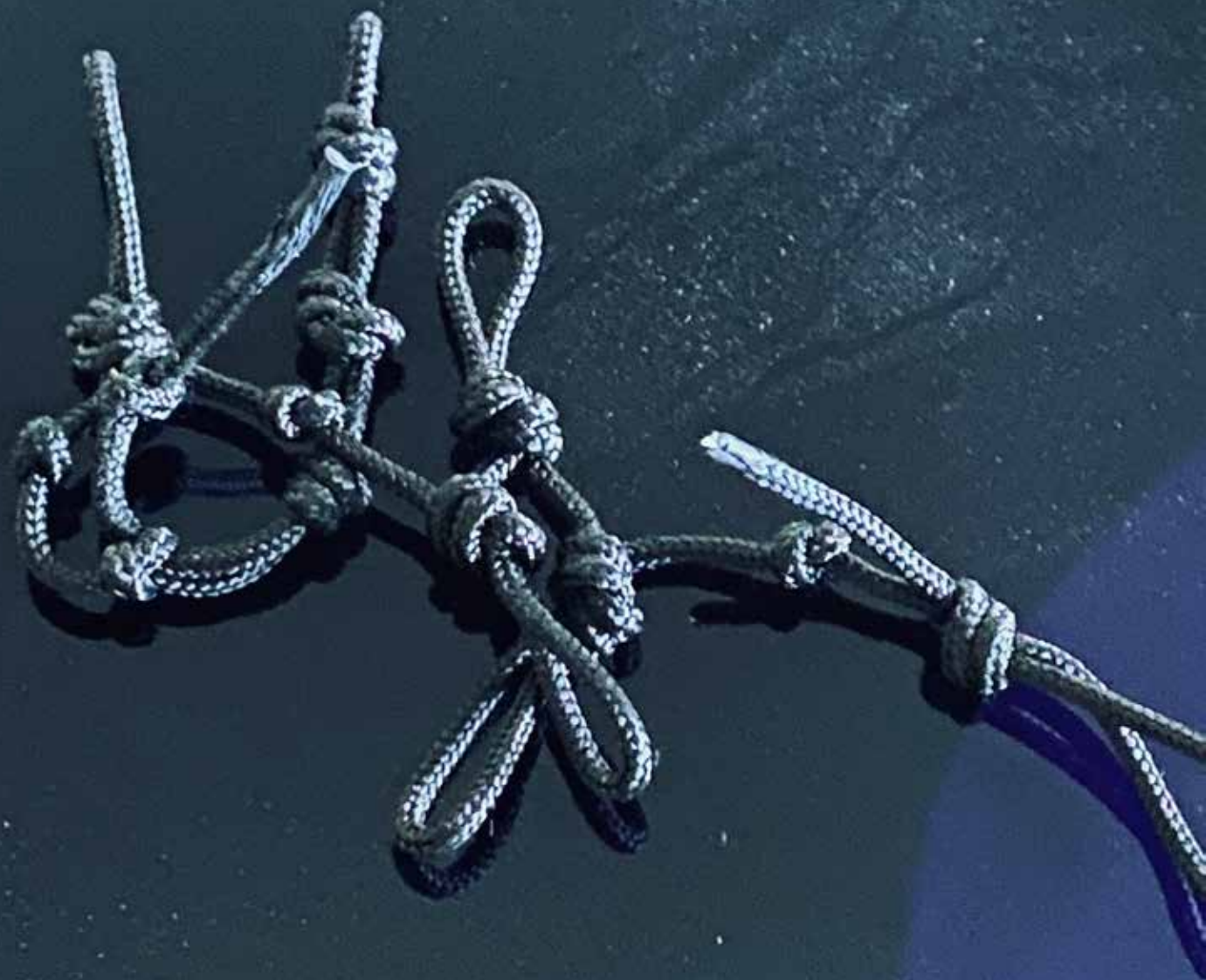


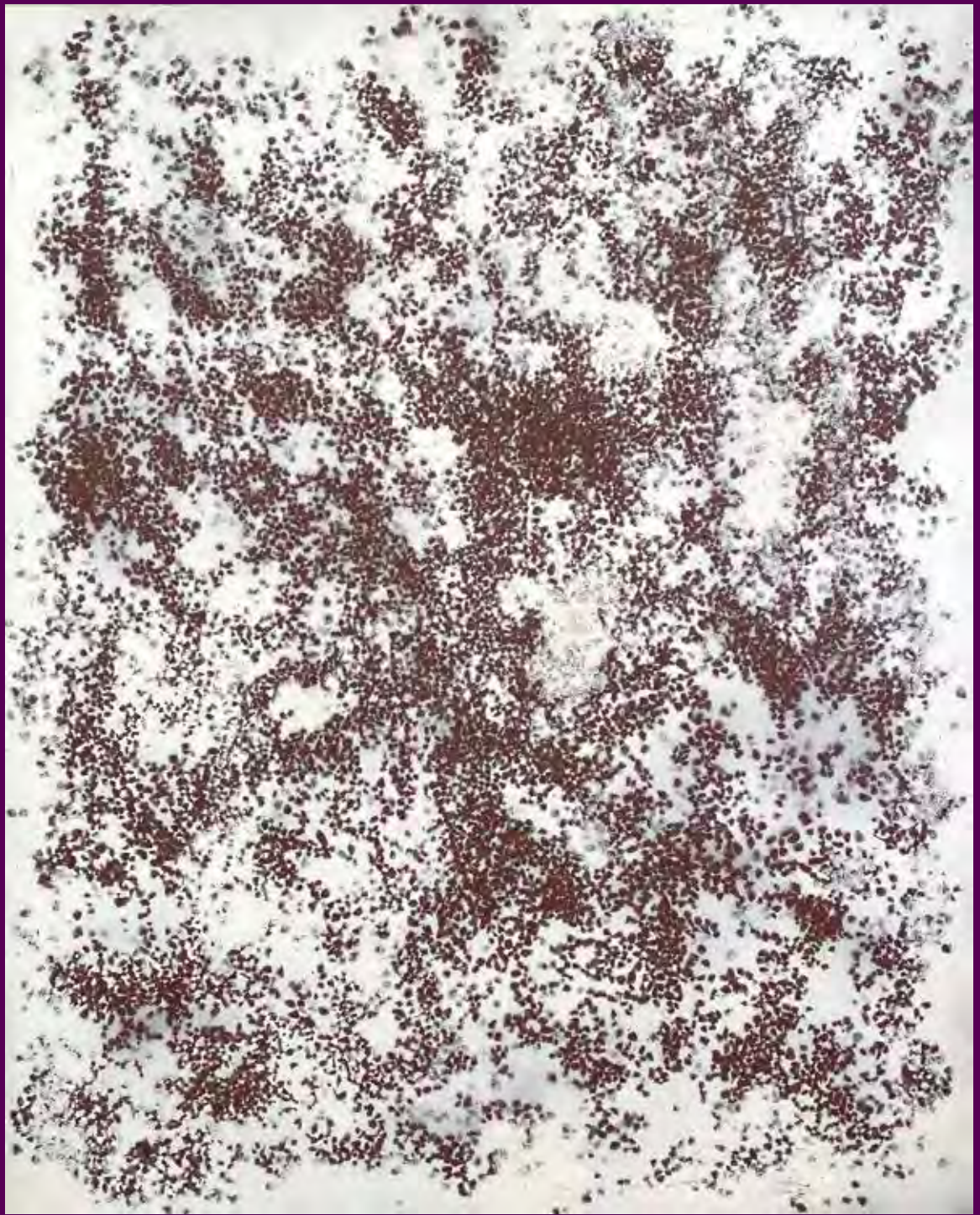


















# *SNARES*

“Dark Snare A,” chromogenic print  
“Dark Snare B,” chromogenic print

# *BESPECKLED* [*MOUSEHOLE PAINTINGS*]

White-pigmented shellac, enamel on aluminum, 76.5 x 60.8 cm

# *SECO*

*Path*, chromogenic print, variable dimension  
*Colony*, chromogenic print, variable dimension  
*Deadwood*, chromogenic print, variable dimension  
*Brush*, chromogenic print, variable dimension

