

CYMK

RGB

COLOR

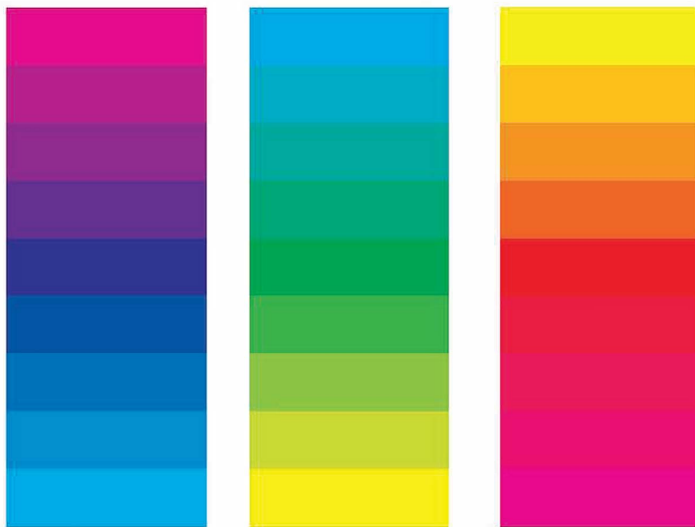
Color is a world onto itself. There are primary colors (Red-Yellow-Blue) and secondary colors (Orange-Violet-Green), which describe the physical-visual world, as a classic 12-point color wheel. Then, there are colors of print (Cyan-Magenta-Yellow-Black) and media (Red-Green-Blue), which describe our mediated-visual experience through paper and screen.

The following CYMK-RGB color palette represents the latter. It co-joins the worlds of print and media into a 24-point color wheel. The biggest difference between the two is that complementary colors are not so optically contrasted and the analogous colors are more nuances and subtle.

The history of making this specific color palette and wheel was slowly achieved over multiple years by multiple faculty who piggy-backed their curricular investigations, in Design 1 at ArtCenter College of Design, as a way to visually articulate the shift from analog to digital space.

I personally would like to thank all of the faculty and students involved in the creation of this color wheel. It would also be remiss of me not to acknowledge the tool, Adobe Illustrator, which had made it possible to accomplish the produce is particular palette/wheel.

## STEPS TO CREATING A 24POINT CYMK/RGB COLOR WHEEL



### A. Create Rectangle

Hold Option while clicking,

Drag while holding Shift

Drop and let go for Angle Tool (9X)

Change bottom color

---

### B. Blend tool double click

Blend Option- specify steps (7x)

Object - Expand - Ungroup

Align Tool (align to key object)

Set at "0", then undistribute

Colored rectangles should be separated

---

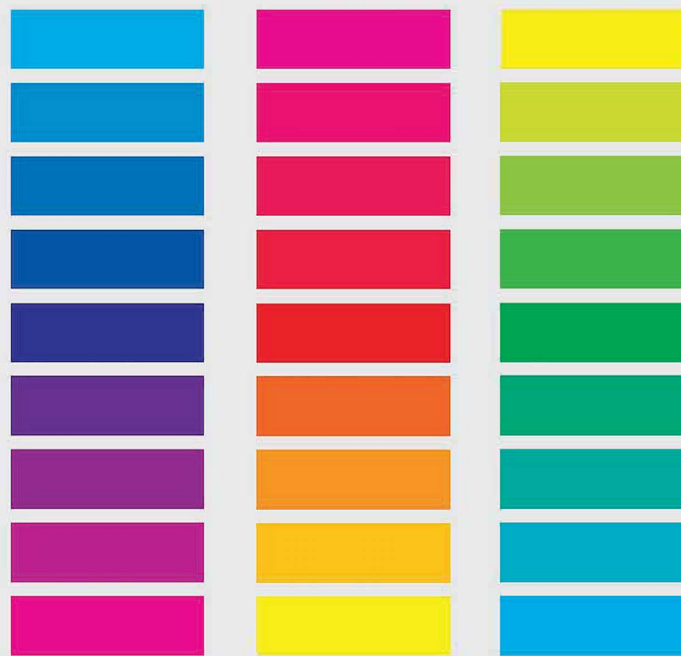
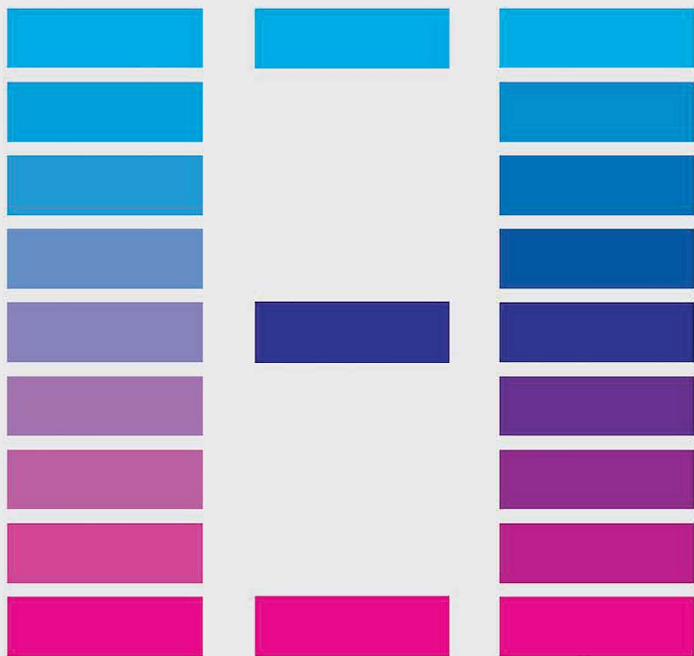
### C. Re-configure center colors by deleting 3 rectangles (between center and top/bottom).

For Green (100 c/100 y), Blue (100 m/100 c), Red (100 m

100y). Repeat B, but use 3 step with blend option.

See next page

## COLOR PALETTE\_CYMK/RGB [24 POINT] CORRECTION TO FULL SATURATION



Create 'cym' color bars by creating a horizontal rectangle.

**Copy**, then **Paste** another rectangle about 8 spaces down.

Select a rectangle and convert it to 100 saturated **CYAN**

Select the other and convert to 100 saturated **MAGENTA**

**Blend Tool**, double click

**Specify steps** (x7)

Click the selected rectangle, then the other.

**Object>Expand>OK**

**Object>Ungroup**

Repeat with other combinations.

After blending each column, convert the middle rectangles

100 percent saturated **BLUE-RED-GREEN**.

[Blue is 100Magenta/100Cyan;

Red is 100Magenta/100 Yellow;

Green is 100Cyan/100Yellow]

Then, remove the three rectangles not 100 percent saturated.

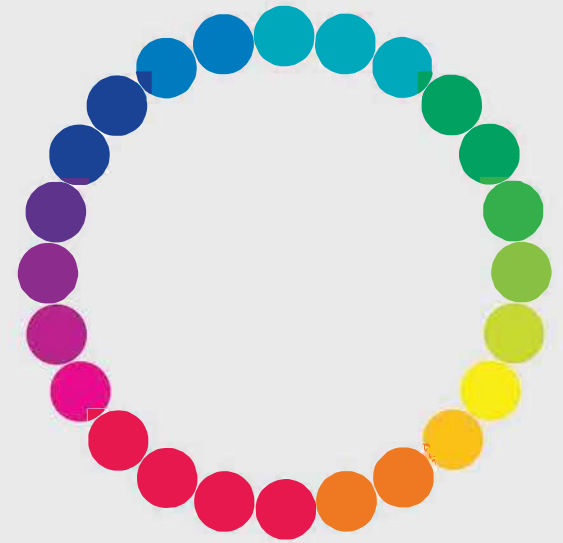
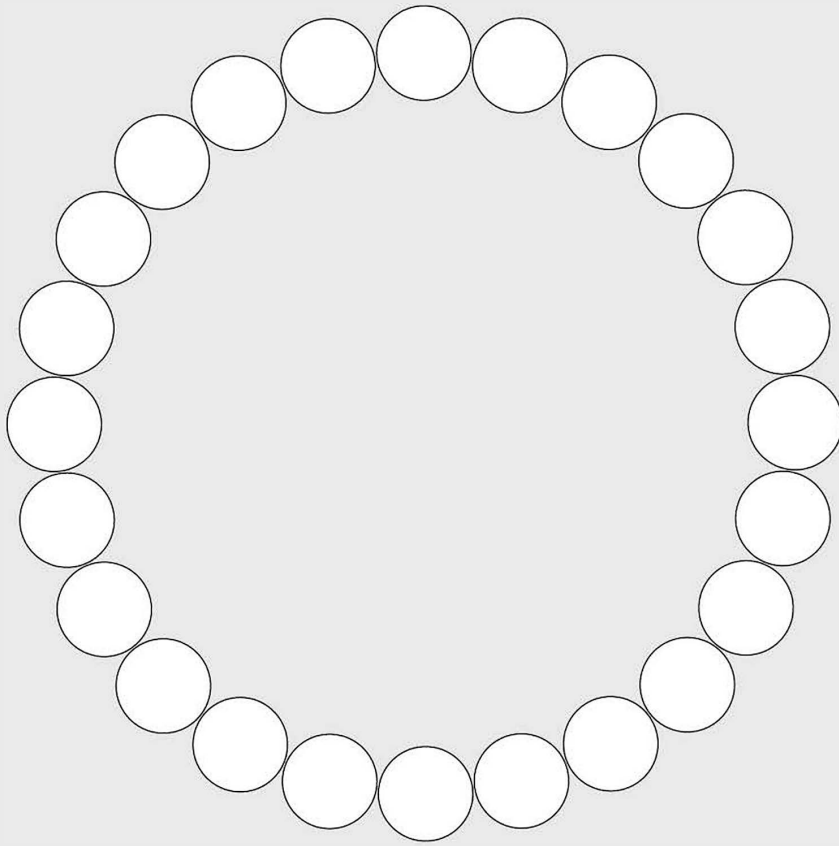
Repeat **Blend Tool> Specify Steps** (x3)

Click the rectangle on top, then the middle, then the bottom.

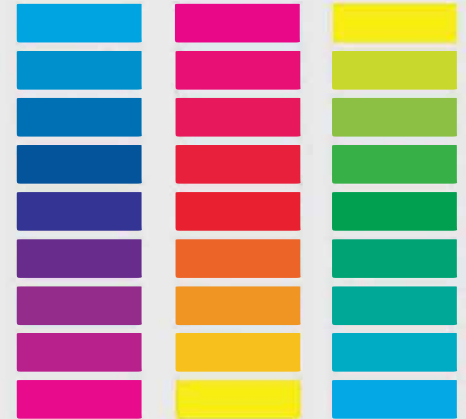
**Object>Expand>OK**

**Object>Ungroup**

Select all and remove outline



Color Palette



Make a circle by selecting the **Ellipse Tool** while holding down **Shift**.  
Select **Rotate Tool** while holding **Option Key**.  
Place cursor about 6-8 circles down, approximating the center, click.  
**Angle: 15 degree**, and click **Copy**  
Use **Command-D x22** (total 24 circles)  
Remove outlines, and fill in circles with colors using **Eyedropper Tool**.